

Date: 12/4/13  
Antibody code 5; cat.# pAB-003-050

Experiment #: JM12.13.76

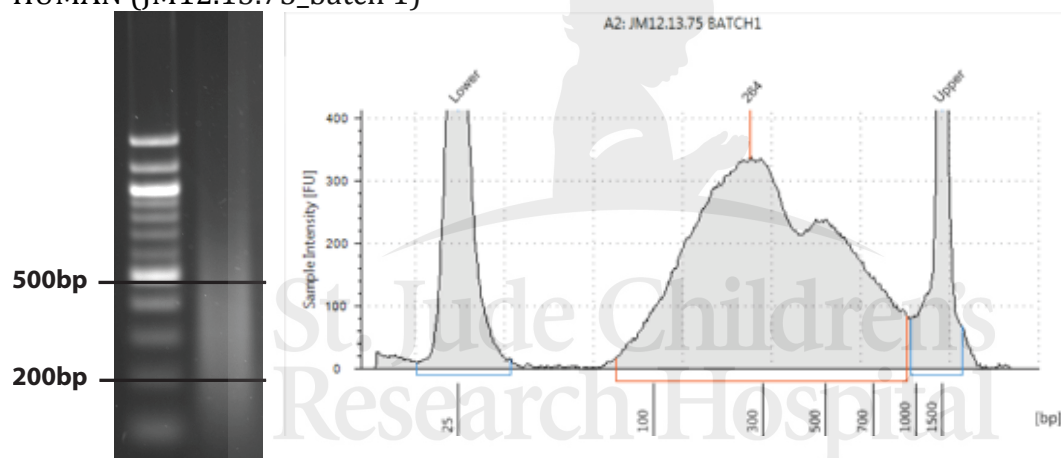
## H3K4me3

Antibody cat #:  
Lot #:  
Company:  
Host species:  
Date validated:  
Validated by Dyer lab member:  
ChIP validated by other:

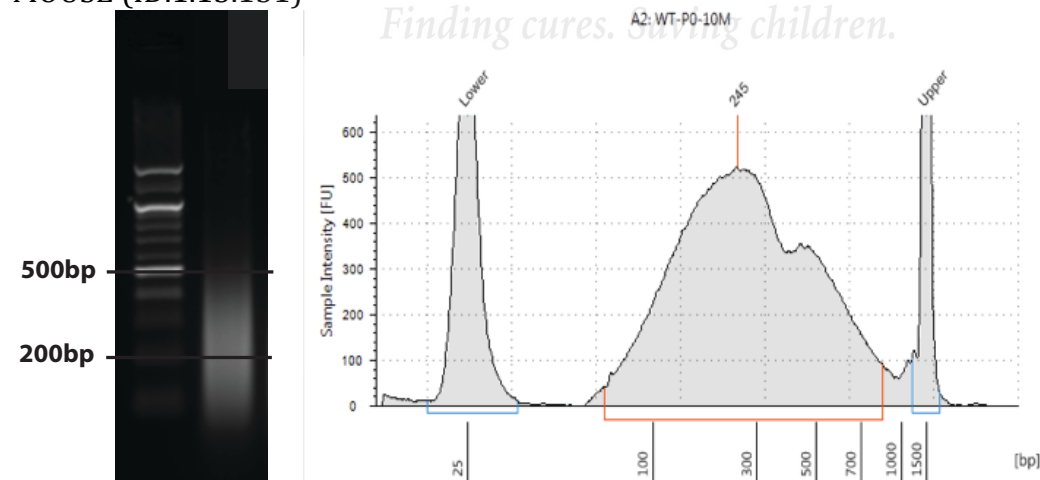
pAB-003-050  
A5051-001P  
Diagenode  
Rabbit  
12/4/13  
JM  
n/a

Dilution for immunoblot: 1:1000  
Antibody amount per ChIP: 2µg/1x10<sup>6</sup> cells (human and mouse).  
Chromatin prep protocol #: JM12.13.75 (human); ID.1.13.131 (mouse)  
Quant-it for human chromatin: 162ng/µl  
Quant-it for mouse chromatin: 77ng/µl  
Protein concentration-human: 0.5µg/µl  
Protein concentration-mouse: 0.3µg/µl

HUMAN (JM12.13.75\_batch 1)



MOUSE (ID.1.13.131)



## Level 1: Western Optimization

### **Purpose:**

To test the efficiency and specificity of the antibody in human and mouse cells. This antibody will be used for future IP validation and /or ChIP experiments.

### **Experiment summary:**

5-10 ug of chromatin from human and mouse will be run on a western and immunoblotted using the antibody being tested. On the same gel, run the same samples to be immunoblotted for total histone. This will be used for later quantitation.

### **Procedure: 1-2 days**

- 1) Dilute 28µl of chromatin with 7µl of 5X sample buffer (must add in beta-mercaptoethanol to buffer first) .
- 2) Heat sample to 95°C for 10 minutes
- 3) Prepare running buffer and pour into electrophoresis chamber. Place precast gradient gels into the chamber (Biorad TGX 15-well 4-20% (456-1096)). \* Remember to remove green strip on the bottom of the gel.
- 4) Remove comb and rinse out the wells with running buffer.
- 5) Load 15ul of sample per well. \*\*Remember to run enough lanes to immunoblot for total H3 or total H4.
- 6) Run gel at 200V (constant volts) for 25 minutes. At this point watch the blue running dye. Continue to let the gel run until the blue dye has reached the bottom. Stop and remove the gel once the blue dye has reached the bottom.
- 7) Separate the plates and manually remove the blue dye with a razor blade.
- 8) Place the gel in transfer buffer for 5-10 minutes to equilibrate.
- 9) Transfer the protein onto 0.2µm nitrocellulose membrane at 100V (constant volts) for one hour.
- 10) Remove the membrane from transfer apparatus directly into 5mls of Odyssey blocking buffer.
- 11) Block for one hour. At this point make antibody dilutions using Odyssey blocking buffer. \*\*Remember to immunoblot for total H3 or total H4 for each western. This is important to relatively quantitate each of the H3 marks.
- 12) Transfer membrane to antibody dilutions and rock over night at 4°C.

Date: 12/4/13

Experiment #: JM12.13.76

Antibody code 5; cat.# pAB-003-050

13) Wash membrane for 5min with 1% TBST (can find recipe in Dyer lab protocol book).  
Repeat wash two more times.

14) Transfer membrane to secondary antibody (infrared fluorescent secondary antibody diluted 1:10,000 in Odyssey blocker).

15) Incubate the membrane for 1 hour (covered with foil) at room temperature on the Belly Dancer.

16) Wash membrane for 5min with 1% TBST (can find recipe in Dyer lab protocol book).  
Repeat wash two more times.

17) Scan membranes on the Odyssey LiCor.

18) Determine the signal for each band using LiCor (please ask Lyra or Justina if you need help).

19) Determine relative amounts of the protein by normalizing to total H3 or H4.

### Recipes and antibody dilutions:

#### RUNNING BUFFER (1 liter)

25mM Tris            3.03g  
192mM glycine    14.4g  
0.1% SDS           5mls (20%)  
Up to 1 L with H<sub>2</sub>O

#### TRANSFER BUFFER (1 liter)

25mM Tris            3.03g  
192mM glycine    14.4g  
methanol            200mls  
Up to 1 L with H<sub>2</sub>O

Primary Antibody	Cat. #	Species	Dilution or micrograms	μl to add to 5mls of Odyssey blocker
H3K4Me3	pAb-003-050	Rabbit	1:1000	5μl
Total H3	Abcam 1791	Rabbit	1:5,000	1μl
Secondary Antibody	Cat. #	Species	Dilution or micrograms	μl to add to 5mls of Odyssey blocker
IRDYE680	926-68071	rabbit	1:10,000	0.5μl

Date: 12/4/13

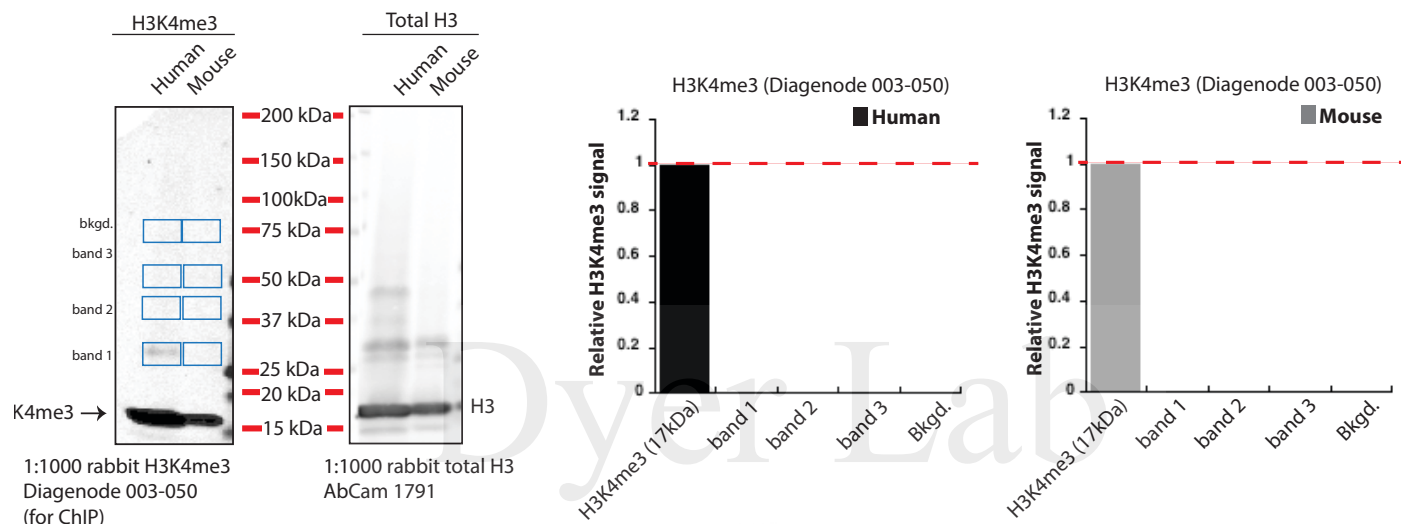
Experiment #: JM12.13.76

Antibody code 5; cat.# pAB-003-050

### Results:

Total protein of human chromatin loaded per lane: 6μg

Total protein of mouse chromatin loaded per lane: 2.4μg



Species	Band	Relative to human H3K4me3
Human	H3K4me3 (17 kDa)	1.00
	Band 1	0.00
	Band 2	0.00
	Band 3	0.00
	Bkgd.	0.00
Mouse	H3K4me3 (17 kDa)	1.00
	Band 1	0.00
	Band 2	0.00
	Band 3	0.00
	Bkgd.	0.00

### Conclusions: (provide yes or no answer)

The background for this antibody in human is acceptable for use in ChIP: **YES**

Antibody passes validation for the level 1 for **human**: **YES**

The background for this antibody in mouse is acceptable for use in ChIP: **YES**

Antibody passes validation for the level 1 for **mouse**: **YES**

### Additional notes:

The major proportion of H3K4me3 (100%) is at the predicted size of 17kda. This is an acceptable signal for expected band according to ENCODE guidelines where it is recommended that the primary reactive band represents >50% of the signal.



**Level 2: ChIP Validation**

(proceed if antibody passes level 1)

**Purpose:**

To determine the optimal chromatin:antibody ratio for ChIP.

**Experiment summary:**

Test 3 x two-fold serial dilutions of human and mouse chromatin starting with 1 million cells per ChIP. Two antibody concentrations will be tested for each chromatin dilution. All ChIPs will be done in triplicate in order to quantitate the amount of protein bound to protein-A beads and to quantitate the amount of chromatin pulled down. IgG negative control will be included in this part of the study. This is a total of 14 IPs per species.

Total number of IPs for level 2 validation for both mouse and human: 28

Total amount of chromatin needed per species: 875µl

Antibody concentration #1 to test: 1µg

Antibody concentration #2 to test: 2µg

**Procedure:****Protein A Magnetic immunoprecipitation: Day 1 (about 2 hours)**

1. Take the required amount of DiaMag Protein A-coated magnetic beads (20 µl/IP). For 28 ChIPs you need 560µl.
2. Make a 5,300µl 1x ChIP buffer iC1:  
Dilute 1060µl of 5X iC1 buffer with 4,240µl of ChIP grade water.  
Place the diluted ChIP buffer iC1 on ice.
3. Wash the beads 4 times 1,120µl of ice-cold 1x ChIP buffer iC1. For each wash, resuspend the beads by pipetting up and down several times and place the tubes in the 1.5 ml magnetic rack. Wait for one minute to allow the beads to be captured by the magnet and remove the supernatant. Repeat this 3 times.
4. After the last wash, resuspend the beads in 560µl 1x ChIP buffer iC1.
5. Prepare the ChIP reaction mix for 28 ChIPs + extra for error in a 15ml conical tube:

# of IP's	5% BSA (µl)	200x Protease inhibitor cocktail (µl)	5x buffer iC1 (µl)	Protein A Magnetic beads (µl)	ChIP-seq grade water (µl)
30	180	45	1680	600	3495

6. **IMPORTANT\*** Remove 820µl and place in a separate tube. This is for IgG.
7. Aliquot the remaining ChIP working mix into two 15ml conical tubes, one for each

Date: 12/4/13

Experiment #: JM12.13.76

Antibody code 5; cat.# pAB-003-050

antibody concentration being tested. This should be 2,590µl per tube. Next, add in antibody and mix:

Abs. concentration #1: 1 µl per reaction x 13 = 13 µl total to ChIP mix

Abs. concentration #2: 2 µl per reaction x 13 = 26 µl total to ChIP mix

IgG: 2µl per reaction x 4 = 8µl

8. Aliquot 400µl of each antibody working mix into 6 tubes (12 tubes total).

9. Aliquot 400µl of IgG working mix into 2 tubes.

10. Prepare chromatin dilutions. To the starting chromatin, please add 1x Covaris shearing buffer to bring the volume up to 1100µl.

1X Covaris shearing buffer (2mls)

Add 200µl of 10X Covaris shearing buffer (D3) from kit (PN 520075) to 1780µl of cold diH2O plus 20µl of 100X protease inhibitors.

<b>HUMAN</b>	Chromatin (10x10e6 cells/ml)	1X Covaris Shearing buffer	Total volume
1 million cells	700µl	0	700µl
0.5 million cells	250µl	250µl	500µl
0.25 million cells	125µl	375µl	500µl

<b>Mouse</b>	Chromatin (10x10e6 cells/ml)	1X Covaris Shearing buffer	Total volume
1 million cells	700µl	0	700µl
0.5 million cells	250µl	250µl	500µl
0.25 million cells	125µl	375µl	500µl

11. Add **HUMAN** chromatin to the appropriate tubes:

**\*\*keep leftover chromatin for input samples\*\***

- ☐ To **1** tube of abs. conc. #1, add 200µl of chromatin from **1 million cells**.
- ☐ To **1** tube of abs. conc. #1, add 200µl of chromatin from **0.5 million cells**.
- ☐ To **1** tube of abs. conc. #1, add 200µl of chromatin from **0.25 million cells**.
  
- ☐ To **1** tube of abs. conc. #2, add 200µl of chromatin from **1 million cells**.
- ☐ To **1** tube of abs. conc. #2, add 200µl of chromatin from **0.5 million cells**.
- ☐ To **1** tube of abs. conc. #2, add 200µl of chromatin from **0.25 million cells**.
  
- ☐ To **1** tube of IgG, add 200µl of chromatin from **1 million cells**.

Total volume per tube should be 600µl

12. Add *MOUSE* chromatin to the appropriate tubes:**\*\*keep leftover chromatin for input samples\*\***

- ☐ To **1** tube of abs. conc. #1, add 200µl of chromatin from **1 million cells**.
- ☐ To **1** tube of abs. conc. #1, add 200µl of chromatin from **0.5 million cells**.
- ☐ To **1** tube of abs. conc. #1, add 200µl of chromatin from **0.25 million cells**.
  
- ☐ To **1** tube of abs. conc. #2, add 200µl of chromatin from **1 million cells**.
- ☐ To **1** tube of abs. conc. #2, add 200µl of chromatin from **0.5 million cells**.
- ☐ To **1** tube of abs. conc. #2, add 200µl of chromatin from **0.25 million cells**.
  
- ☐ To **1** tube of IgG, add 200µl of chromatin from **1 million cells**.

13. Incubate the tubes overnight at 4°C under constant rotation.

14. Remove 20µl of the remaining chromatin at each dilution and transfer to a new tube. These will be used as the input samples. Place them at 4 degrees overnight. Freeze leftover chromatin in case we need to repeat any input samples.

**Elution and Reverse Crosslinking: Day 2 (about 4hours)**

15. The next morning, after the overnight incubation, briefly spin the tubes at 1300RPM and place them in the magnetic rack. Wait for one minute and remove the supernatant. Wash the beads with Wash buffer iW1. To wash the beads, add 700 µl of iW1, gently shake the tubes to resuspend the beads and incubate for 5 minutes on a rotating wheel at 4°C.
16. Repeat the wash as described above once with Wash buffer iW2, iW3 and iW4 using the same buffer volume, respectively.
17. While beads are in iW4, remove 350µl from each tube and transfer to new tubes. These will be the duplicate samples that will go on for DNA purification at step 21. Set these aside. Then proceed to step 18 with the remaining samples.

\*\*\*\*\*Stop\*\*\*\*\*

**For protein bound to beads:**

18. Remove the last wash from the duplicate samples (7 human and 7 mouse) and add 65µl of 2X sample buffer and vortex.
19. Prepare the input sample. For 5% input, take 5µl of each input sample and add 60µl of 2X sample buffer and vortex.
20. Incubate at 95C for 10 minutes.
21. Store in -20C until ready to run western.

## 22. Make the reverse crosslinking mix:

- Add 8.4ml of iE1 buffer
- 168ul of Proteinase K (20mg/ml - Invitrogen)

## 23. After removing the last wash buffer, add 400µl of reverse crosslinking mix to the beads.

**\*\*Input samples\*\***

Add 390µl of reverse crosslinking mix to 10µl of chromatin for each dilution (a total of 6 inputs –human and mouse).

## 24. Incubate for 30 minutes at 55C in the thermomixer at 1000RPM.

## 25. Briefly spin the tubes and add 16 µl of iE2 buffer. Wrap parafilm around the lids of the tubes to seal and minimize evaporation. Incubate overnight in a thermomixer at 900rpm at 65°C.

*If in a rush, it is possible to incubate at 4 hours and still get a good yield.*

**DNA Purification: Day 3 (about 4hours)**

**The following protocol is the DNA Purification protocol that was used to establish this validated antibody. A separate protocol that is the current working Dyer protocol for ChIP has been added in the next section.**

## 26. Briefly spin the tubes and place on the magnetic rack. Transfer sample to a new siliconized tube. This step does not include the input samples as they do not have beads.

## 27. Add 2 µl of carrier to each IP and input sample. Vortex briefly and perform a short spin.

## 28. Add 400 µl of 100% isopropanol to each IP and input sample. Vortex briefly and perform a short spin.

## 29. Resuspend the provided Magnetic beads and transfer 15 µl to each IP and input sample.

- Keep Magnetic beads in liquid suspension during storage at 4°C and at all handling steps, as drying will result in reduced performance.

## 30. Incubate IP and input samples for 1 hour at room temperature on a rotating wheel .

## 31. Briefly spin the tubes, place in the magnet rack, wait 1 minute and discard the buffer. Keep the captured beads and add per tube, 100 µl Wash buffer 1. Close the tubes and incubate for 5 minutes at room temperature on a rotating wheel.

- Do not disturb the captured beads attached to the tube wall.

## 32. Briefly spin the tubes, place in the magnet rack, wait 1 minute and discard the buffer. Keep the captured beads and add per tube, 100 µl Wash buffer 2. Close the tubes and incubate for 5 minutes at room temperature on a rotating wheel.

- Do not disturb the captured beads attached to the tube wall.

33. Briefly spin the tubes, place in the magnet rack, wait 1 minute and discard the buffer. Keep the captured beads and add 40µl of buffer C (water).
34. Incubate at 55C for 30 minutes in the thermomixer at 1400RPM.
35. Briefly spin the tubes, place in the magnet rack, wait 1 minute and transfer the supernatant to a new 1.5ml siliconized tube. This is your DNA. Quantitate using Quantit or equivalent.

**DNA Purification with QIAGEN MinElute PCR Purification kit:**

**Day 3 (about 3 hours).**

**This protocol is the current working Dyer protocol for DNA Purification after ChIP. This is not the protocol that was used to validate this antibody, but is recommended for future ChIPs.**

36. In a separate conical tube, mix PB buffer and 3M NaOAc for samples: you will need 1.75 mL PB buffer and 20 µL 3 M NaOAc per sample. Aliquot 1.75 mL per IP, IgG, and input sample.
37. Add the reverse crosslinked material to the tube and vortex briefly.
38. Transfer the sample to a Qiagen min-elute column and spin at 1000 x g for 1min. Repeat until all sample has been added, discarding flow-through after each spin.
39. Add 750µl of PE buffer and spin at 1000 x g for 1 min.
40. Remove flow-through and spin at 13,000RPM for 1 min to dry column.
41. Transfer column to a new labeled 1.5 ml tube and add 55 µl of buffer C (from Diagenode kit) .
42. Let the samples sit at RT for 5 min and spin at 13,000RPM for 1 min. This is your DNA.

Date: 12/4/13

Experiment #: JM12.13.76

Antibody code 5; cat.# pAB-003-050

**Quantitative Real Time PCR: Day 3 or 4 (about 1 hour)**

Positive target primers: Human GAPDH-TSS; mouse Gapdh

Negative target primers: Human MYOGLOBIN; mouse Myoglobin

43. Set up the following quantitative real-time PCR reaction for each primer set:

	1X Mix ( $\mu$ l)	22 X mix human positive	22 X mix human negative	22 X mix mouse positive	22 X mix mouse negative
Sybr green (Select master)	10	220	220	220	220
Primers (10 $\mu$ M)	**1	22	22	22	22
Water	4	88	88	88	88

\*\*If using Active Motif primers, use 2ul instead of 1ul)\*\*

44. Load 15 $\mu$ l of PCR reaction mix into at 96 well dish.

45. Add 5 $\mu$ l of reverse crosslinked DNA to each well.

46. Select the "Enrichment PCR" assay on the qPCR:

-5 min at 95C

-40cycles of:

30 sec at 95C

30 sec at 60C

30 sec at 72C

-Add in a melting curve step.

47. Save file as JM.12.13.76\_qpcr

**Tapestation: Day 3 or 4 (about 20 minutes)**

48. Add 3 $\mu$ l of D1K buffer to 1 $\mu$ l of ChIP DNA into a separate 0.2ml tube
49. Vortex for 5 sec and spin briefly
50. Load the tapestation tape, tubes and tips and run samples according to the manual instructions.
51. Click on the “electrograph” icon and “scale to sample” icon. Then click on edit peaks and select the major peak on the electrograph. Finally, click EPG snapshot. Repeat this step for all samples.
52. Under the file menu, click “create report” and then click “add EPG thumbnails”
53. Save file as JM12.13.76\_TS
54. If there are some samples where the traces can not be made, please try the HS D1000 reagents for these samples only. Add 2ul of HS D1000 reagent and 2ul of ChIP DNA into a separate 0.2ml tube. Follow the remaining steps. Save file as JM12.13.76\_HS\_TS

**Broad Range Quant-it assay: Day 3 or 4 (about 20 minutes)**

55. Make a working solution:  
6,965ul of HS buffer  
35ul of HS reagent
56. Add 190ul of working solution to 29 wells of a 96-well black plate.
57. Add 10ul of standard to each well. This should come out to 0ng, 5ng, 10ng, 20ng, 40ng, 60ng, 80ng, 100ng.
58. Add 5ul of sample to each well.
59. Mix all wells by pipetting.
60. Run on plate reader. Choose protocol “picogreen”. While on the plate layout, go to template editor and assign the standards and the unknowns (undiluted).
61. Save file as JM12.13.76\_quantit

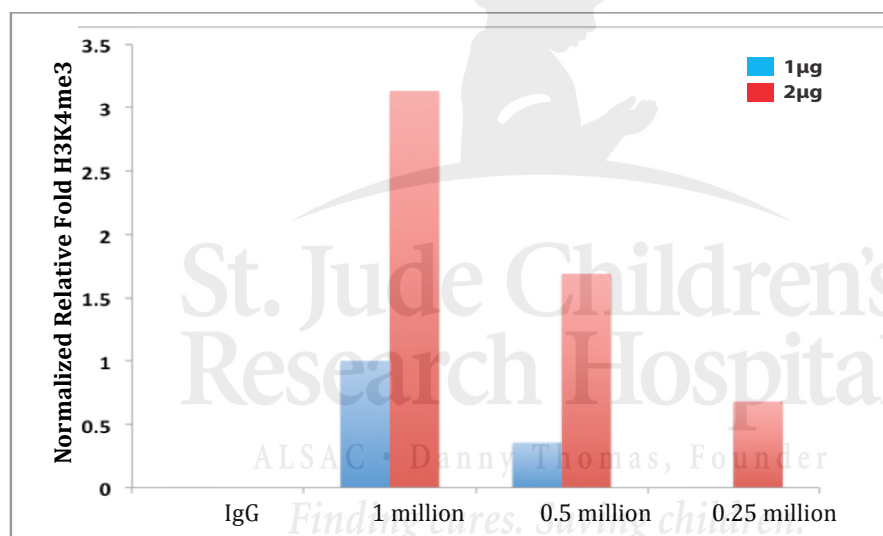
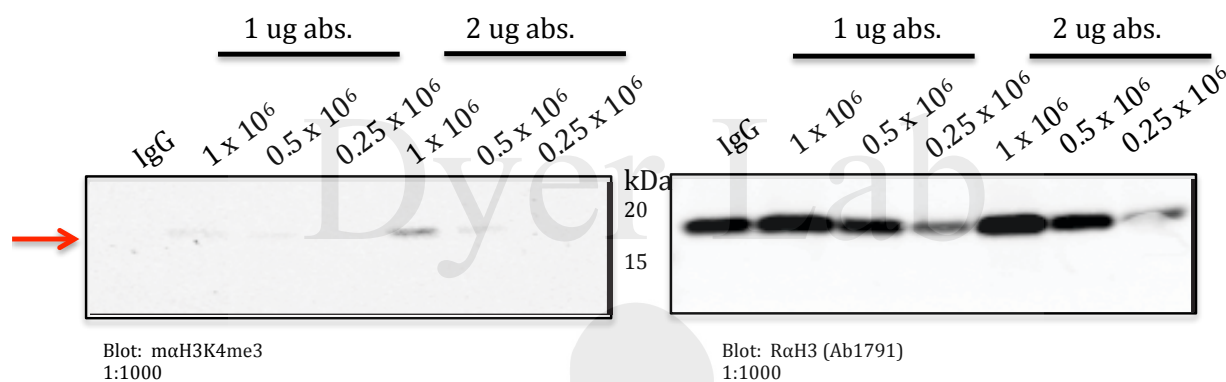


## Results:

**Please copy and paste results. Do not type data into tables**

### Protein bound to beads:

Human  
ChIP: H3K4me3 (Diagenode 003-050)



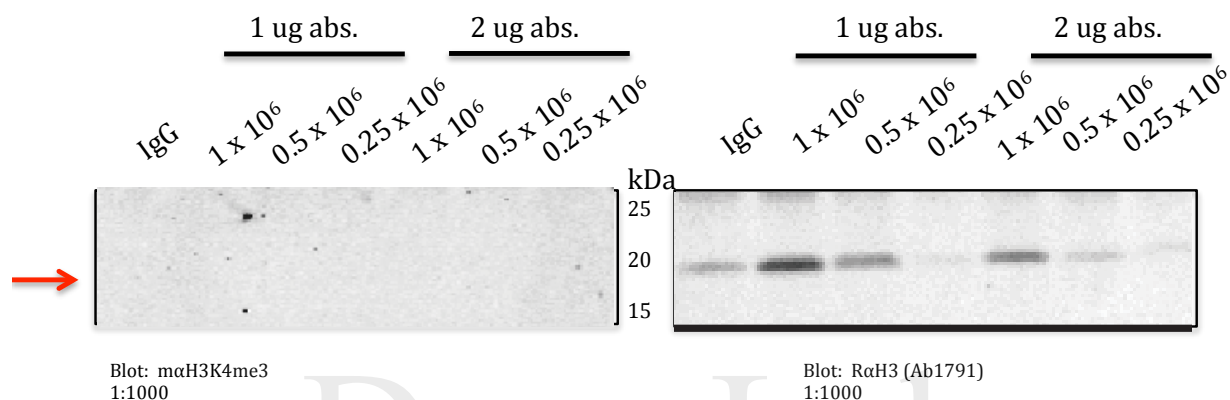
Date: 12/4/13

Experiment #: JM12.13.76

Antibody code 5; cat.# pAB-003-050

Mouse

ChIP: H3K4me3 (Diagenode 003-050)

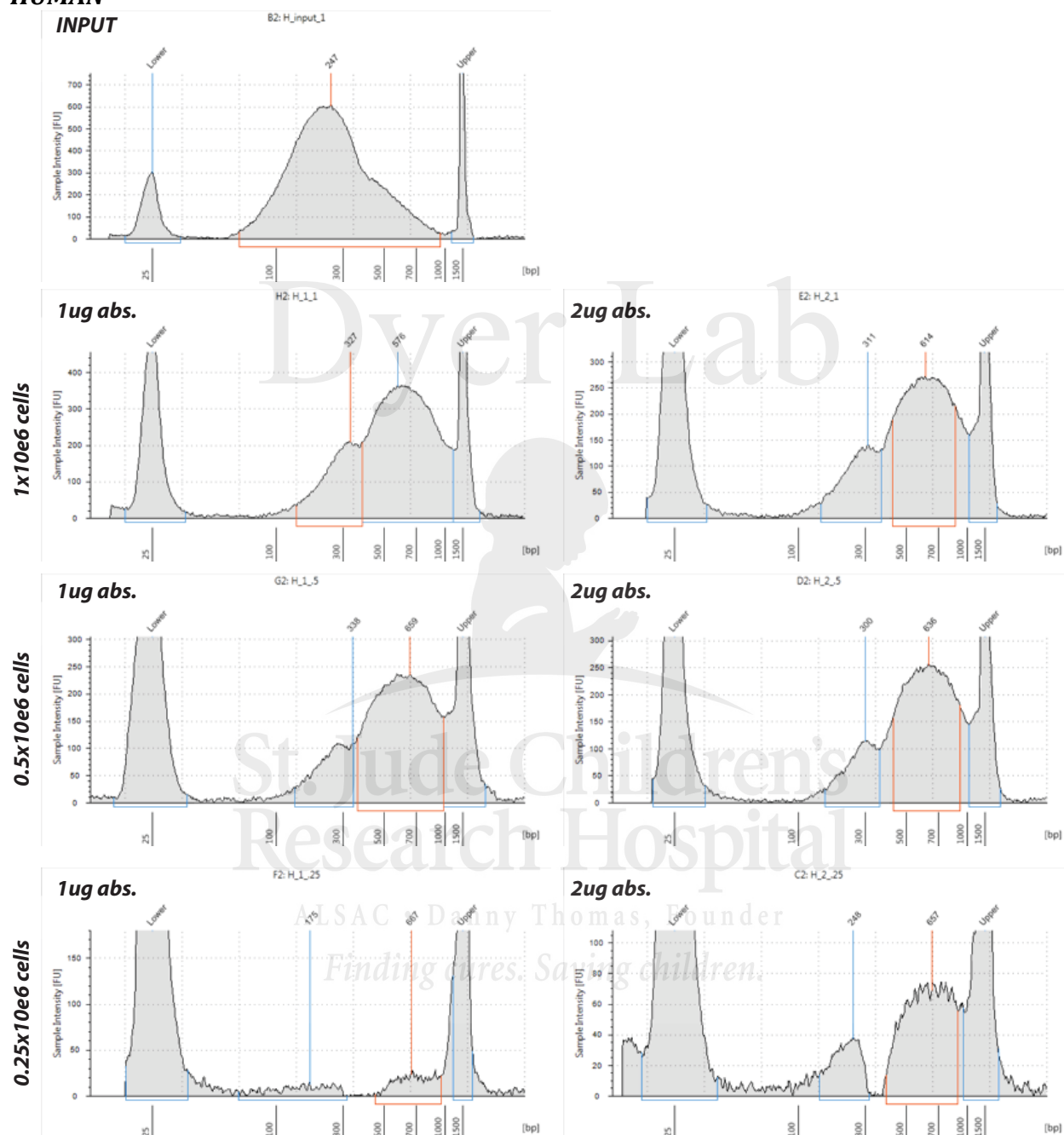


**H3K4me3 bands could not be identified in any of the lanes. Could not quantitate.**

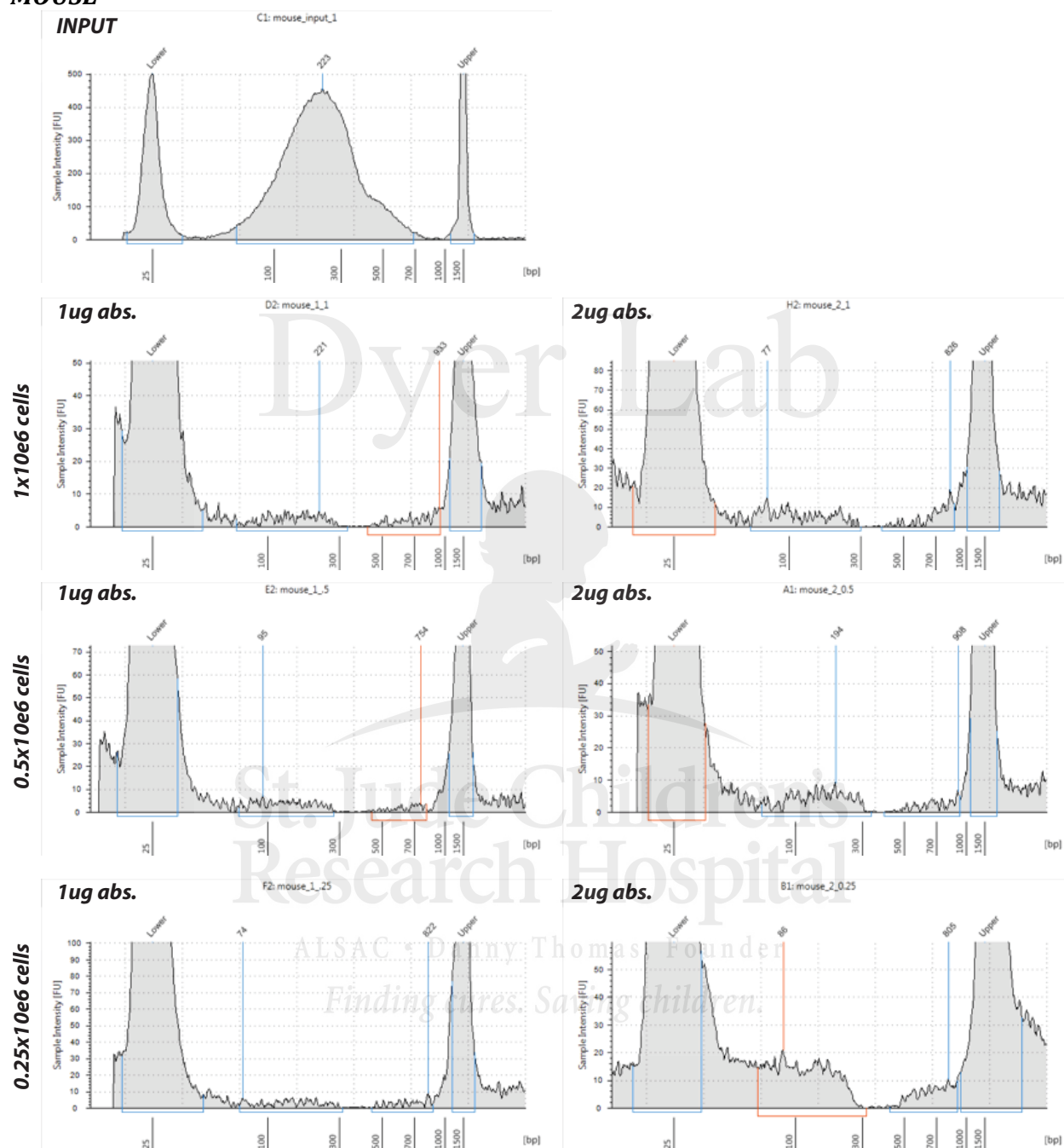


# Bioanalyzer of ChIP DNA:

## HUMAN



# MOUSE



Date: 12/4/13  
Antibody code 5; cat.# pAB-003-050  
**Quant-it**

Experiment #: JM12.13.76

<b>HUMAN</b>	<b>1µg H3K4me3 (ng/µl)</b>	<b>Total ng</b>	<b>2µg H3K4me3 (ng/µl)</b>	<b>Total ng</b>	<b>Input (ng/µl)</b>	<b>Total ng</b>	<b>IgG (ng/µl)</b>
1 million cells	6.97	243.95	5.43	190.05	36.10	1263.5	0.54
0.5 million cells	2.40	84	6.17	215.95	14.63	512.05	
0.25 million cells	0.46	16.1	1.24	43.4	6.51	227.85	
<b>MOUSE</b>	<b>1µg H3K4me3</b>	<b>Total ng</b>	<b>2µg H3K4me3</b>	<b>Total ng</b>	<b>Input</b>	<b>Total ng</b>	<b>IgG</b>
1 million cells	-0.34		-0.36		12.77		-0.40
0.5 million cells	-0.35		-0.46		5.73		
0.25 million cells	-0.43		-0.43		4.42		

### Quantitative PCR

Positive target primers: **GAPDH**  
Negative target primers: **MYOGLOBIN**

#### HUMAN

		<b>GAPDH</b>	<b>Average IP CT</b>	<b>% of input</b>	<b>Myo.</b>	<b>Average IP CT</b>	<b>% of input</b>
1ug	1x10e6 cells	21.95	21.50	9.94	24.47	24.49	1.07
1ug		21.04			24.50		
1ug	.5x10e6 cells	23.94	23.77	3.83	26.08	26.19	0.73
1ug		23.59			26.29		
1ug	.25x10e6 cells	23.73	23.69	8.16	27.81	27.84	0.45
1ug		23.65			27.86		
		<b>GAPDH</b>	<b>Average IP CT</b>	<b>% of input</b>	<b>Myo.</b>	<b>Average IP CT</b>	<b>% of input</b>
2ug	1x10e6 cells	22.03	21.75	8.36	25.18	25.22	0.64
2ug		21.46			25.26		
2ug	.5x10e6 cells	22.42	22.40	9.91	25.65	25.63	1.07
2ug		22.37			25.60		
2ug	.25x10e6 cells	25.02	24.89	3.55	27.67	27.61	0.52
2ug		24.76			27.55		
		<b>GAPDH</b>	<b>Average IP CT</b>	<b>% of input</b>	<b>Myo.</b>	<b>Average IP CT</b>	<b>% of input</b>
2ug	IgG 1x10e6	30.93	30.77	0.00	25.31	25.27	0.10
2ug		30.60			25.23		
		<b>GAPDH</b>	<b>Adjusted CT</b>	<b>Avg. Input</b>	<b>Myo.</b>	<b>Adjusted CT</b>	<b>Avg. Input</b>
	Input 1x10e6	21.36	18.04	18.17	21.25	17.93	17.94
		21.61	18.29		21.26	17.94	
	Input 0.5x10e6	22.45	19.13	19.06	22.41	19.09	19.09
		22.31	18.99		22.40	19.08	
	Input 0.25x10e6	23.42	20.10	20.08	23.33	20.01	20.03
		23.37	20.05		23.36	20.04	

Positive target primers: **GAPDH**

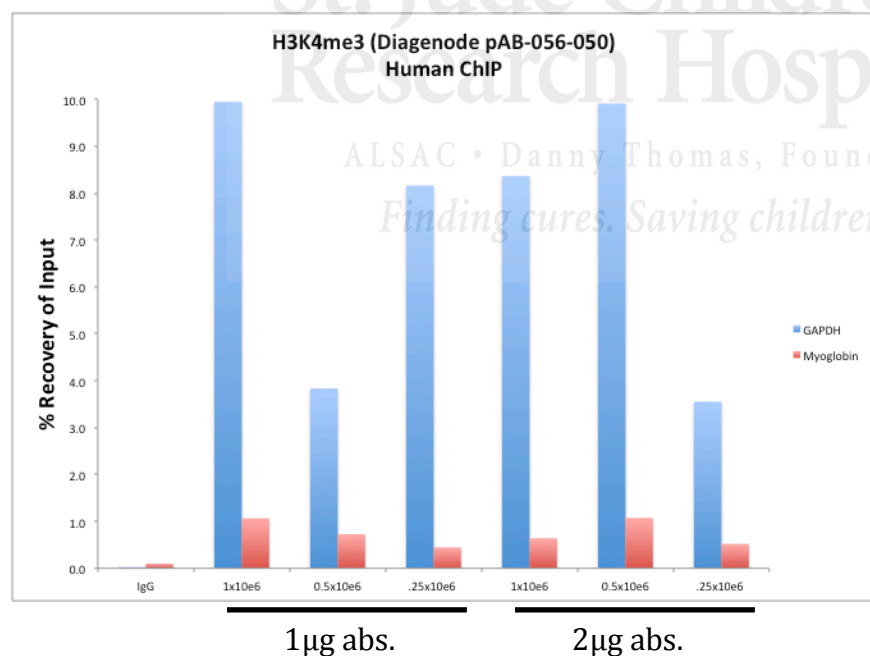
Date: 12/4/13

Experiment #: JM12.13.76

Antibody code 5; cat.# pAB-003-050

Negative target primers: **MYOGLOBIN****MOUSE**

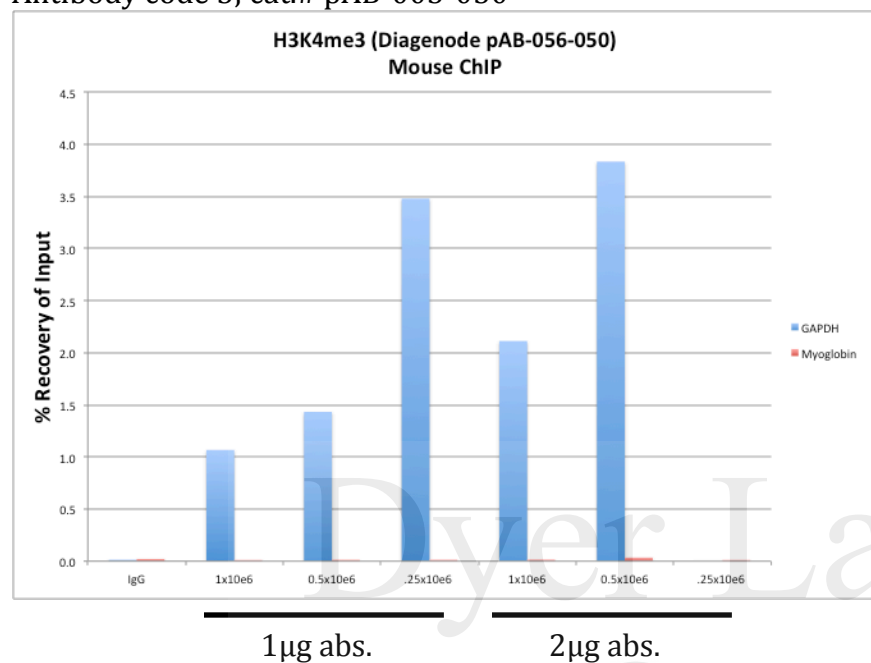
		<b>GAPDH</b>	<b>Average IP CT</b>	<b>% of input</b>	<b>Myo.</b>	<b>Average IP CT</b>	<b>% of input</b>
1ug	1x10e6 cells	25.38	25.42	1.07	32.24	32.06	0.01
1ug		25.45			31.87		
1ug	.5x10e6 cells	25.97	26.06	1.43	32.26	32.54	0.01
1ug		26.15			32.81		
1ug	.25x10e6 cells	25.16	25.46	3.48	32.75	33.24	0.02
1ug		25.75			33.73		
		<b>GAPDH</b>	<b>Average IP CT</b>	<b>% of input</b>	<b>Myo.</b>	<b>Average IP CT</b>	<b>% of input</b>
2ug	1x10e6 cells	24.51	24.43	2.11	31.31	31.34	0.02
2ug		24.35			31.37		
2ug	.5x10e6 cells	24.63	24.64	3.83	31.13	31.30	0.03
2ug		24.65			31.47		
2ug	.25x10e6 cells	n/a	#DIV/0!	#DIV/0!	36.06	36.06	0.00
2ug		n/a			n/a		
		<b>GAPDH</b>	<b>Average IP CT</b>	<b>% of input</b>	<b>Myo.</b>	<b>Average IP CT</b>	<b>% of input</b>
2ug	IgG 1x10e6	31.75	31.65	0.01	30.94	30.93	0.02
2ug		31.55			30.91		
		<b>GAPDH</b>	<b>Adjusted CT</b>	<b>Avg. Input</b>	<b>Myo.</b>	<b>Adjusted CT</b>	<b>Avg. Input</b>
	Input 1x10e6	22.20	18.88	18.87	22.09	18.77	18.75
		22.17	18.85		22.05	18.73	
	Input 0.5x10e6	23.27	19.95	19.94	23.25	19.93	19.82
		23.24	19.92		23.02	19.70	
	Input 0.25x10e6	23.92	20.60	20.61	23.79	20.47	20.55
		23.94	20.62		23.95	20.63	



Date: 12/4/13

Experiment #: JM12.13.76

Antibody code 5; cat.# pAB-003-050



**Conclusions: (provide yes or no answer)**

**Human Tissue**

The ratio of the positive versus negative control targets is 5 or higher: YES

Antibody passes validation for level 2: YES

**Mouse Tissue**

The ratio of the positive versus negative control targets is 5 or higher: YES

Antibody passes validation for level 2: YES.

This antibody passes for human ChIP and is corroborated with ChIP-seq data that gave good peaks with >95% overlap with a biological replicate using a second independent antibody to H3K4me3. I recommend using this antibody for ChIP-seq with additional validation of positive and negative target genes.

**Additional notes:**

Scale up ChIP reactions in order to meet the minimum DNA yield of 10-15ng for ChIP-seq library prep in PCGP.